

NOTE: SEE "ENLARGED DETAIL OF FLASHINGS AND MEMBRANES"

LADDER TYPE HORIZONTAL JOINT REINFORCEMENT @ 16" O.C. (UNLESS NOTED OTHERWISE) W/ ADJUSTABLE TIES

2" RIGID INSULATION

PEASTONE OR MESH DRAINAGE

24" SPACING ON JOINT REINFORCEMENT AT THIS LOCATION ONLY

GROUT COLLAR SOLID

8" CMU

4" CMU (SMOOTH FACE UNITS, 100% SOLID)

1 1/4" x 1/8" TERMINATION BAR W/ 1/4" DIA. x 1 1/4" EXPANSION PINS @ 16" O.C. (MIN.)

FULLY ADHERED MEMBRANE FLASHING

FULLY ADHERED SECONDARY MEMBRANE FLASHING

BRICK VENEER

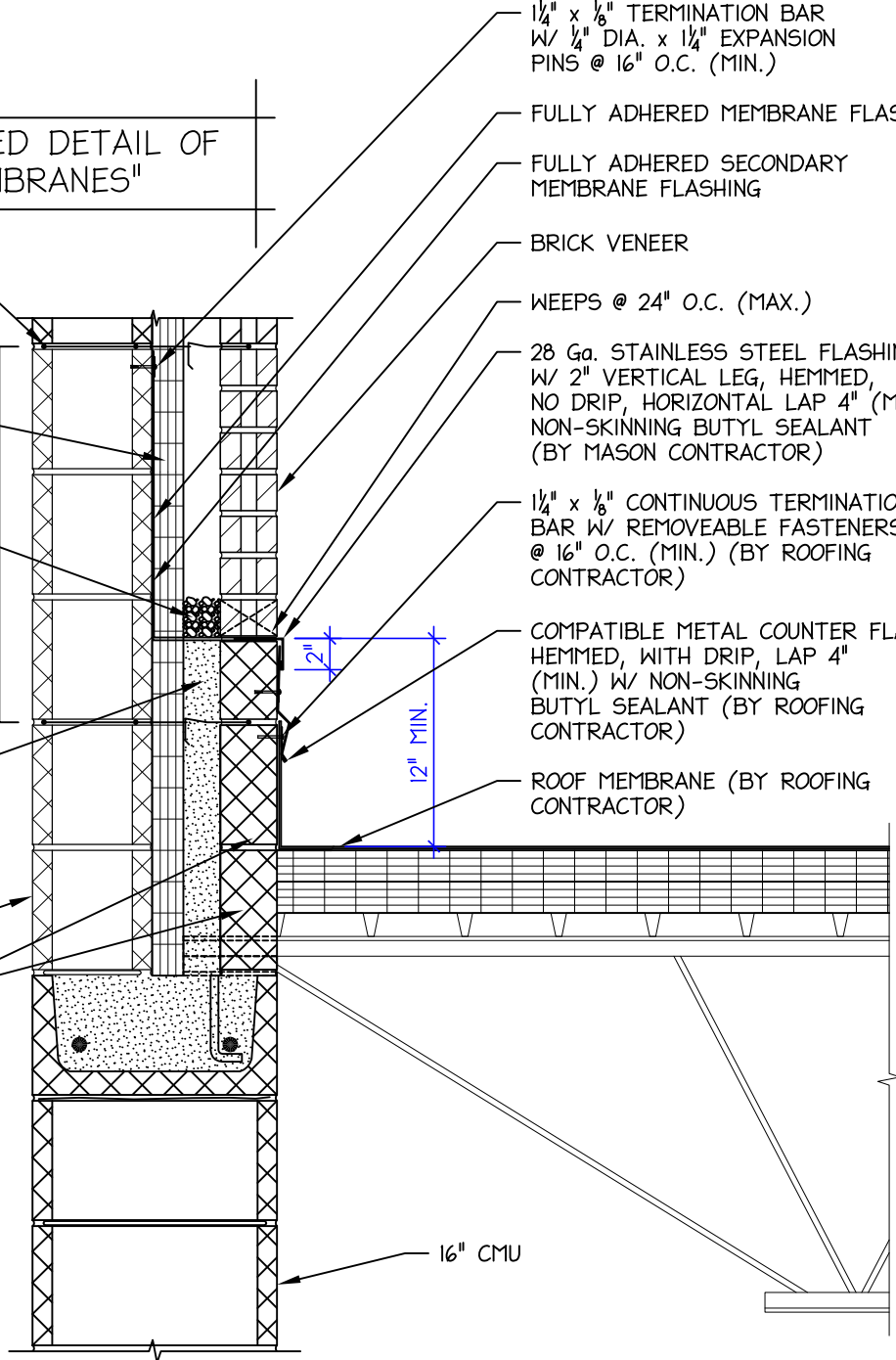
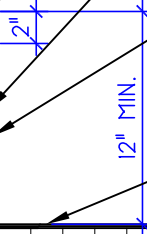
WEEPS @ 24" O.C. (MAX.)

28 Ga. STAINLESS STEEL FLASHING W/ 2" VERTICAL LEG, HEMMED, NO DRIP, HORIZONTAL LAP 4" (MIN.) W/ NON-SKINNING BUTYL SEALANT (BY MASON CONTRACTOR)

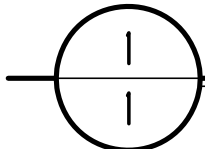
1 1/4" x 1/8" CONTINUOUS TERMINATION BAR W/ REMOVEABLE FASTENERS @ 16" O.C. (MIN.) (BY ROOFING CONTRACTOR)

COMPATIBLE METAL COUNTER FLASHING, HEMMED, WITH DRIP, LAP 4" (MIN.) W/ NON-SKINNING BUTYL SEALANT (BY ROOFING CONTRACTOR)

ROOF MEMBRANE (BY ROOFING CONTRACTOR)



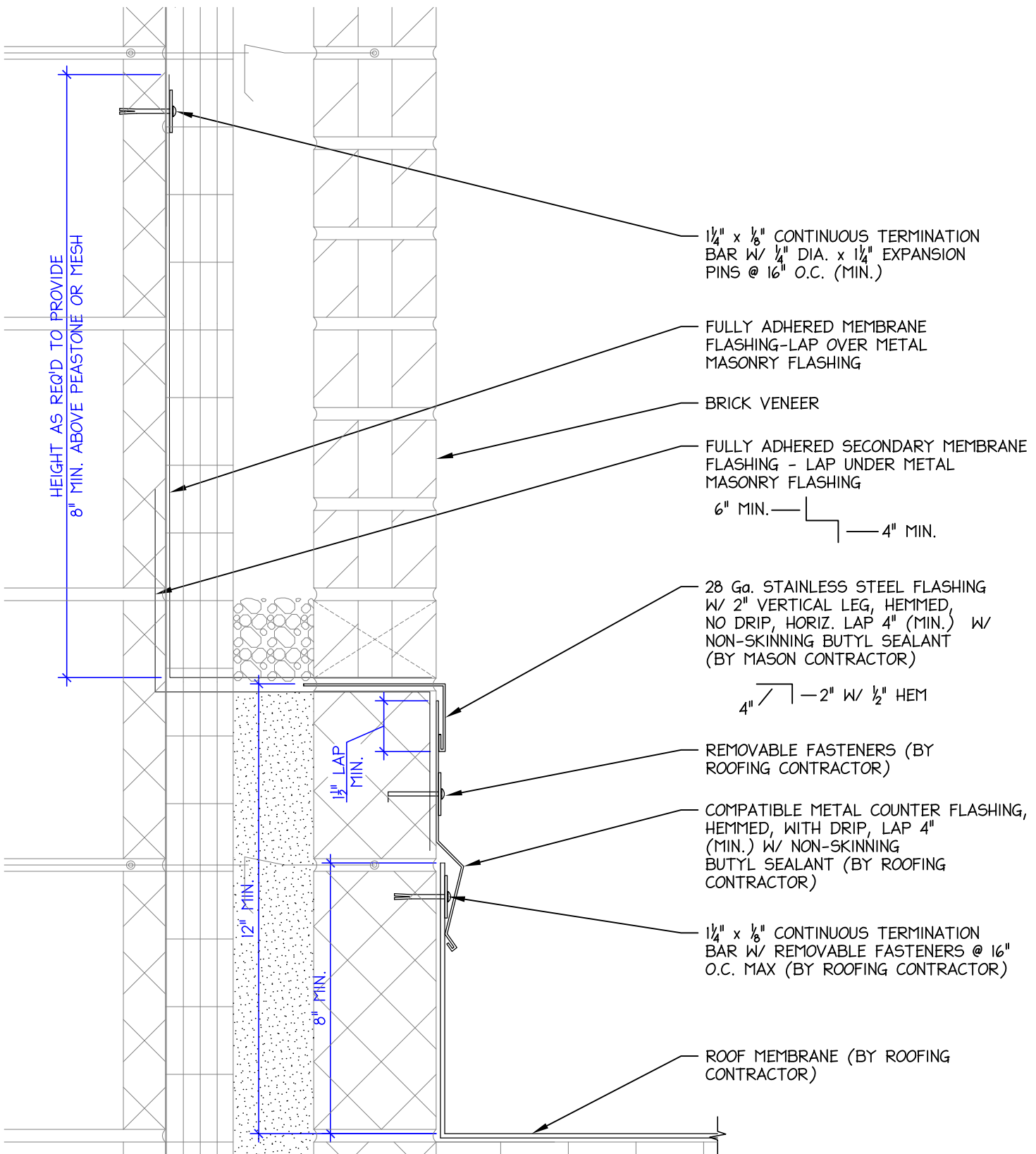
HIGH CAVITY WALL FLASHING DETAIL @ LOW SLOPE LOW ROOF



SCALE: 1"=1'-0"

REVISED: 12-15-2008

NOTE:
"LOW SLOPE" ROOFS ARE DEFINED AS ROOFS WITH A SLOPE LESS THAN OR EQUAL TO 3:12 (14°)



ENLARGED DETAIL OF FLASHINGS AND MEMBRANES

2
1

SCALE: 3"=1'-0"

REVISED: 12-15-2008

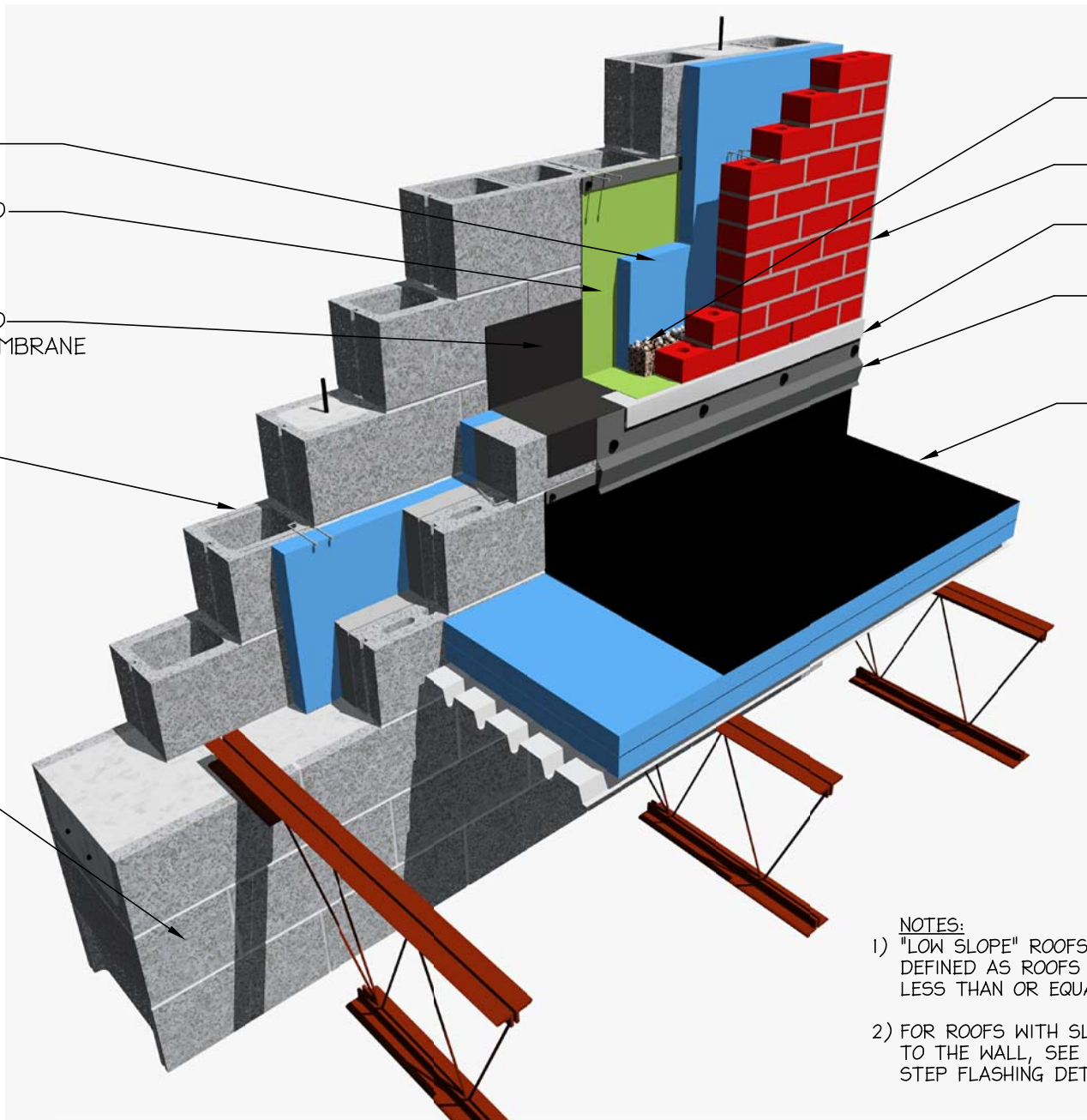
2" INSULATION

FULLY ADHERED
MEMBRANE
FLASHING

FULLY ADHERED
SECONDARY MEMBRANE
FLASHING

8" CMU

16" CMU



PEASTONE OR MESH
DRAINAGE

BRICK VENEER

STAINLESS STEEL
FLASHING

COMPATIBLE
METAL ROOFING
COUNTERFLASHING

MEMBRANE ROOFING

- NOTES:
- 1) "LOW SLOPE" ROOFS ARE DEFINED AS ROOFS WITH A SLOPE LESS THAN OR EQUAL TO 3:12 (14°)
 - 2) FOR ROOFS WITH SLOPE PARALLEL TO THE WALL, SEE SERIES 2 FOR STEP FLASHING DETAILS.

ISOMETRIC - HIGH CAVITY WALL FLASHING @ LOW SLOPE LOW ROOF

DATE:
DEC. 15, 2008

DWG. NUMBER

3
1